

DOVER WESTERN DOCKS REVIVAL (DWDR) NEWSLETTER



Autumn 2018



- **WELCOME FROM DWDR**

Marking Milestones in Style

VolkerStevin Boskalis Westminster (VSBW)

VolkerFitzpatrick

Buckingham Group Ltd

WW Martin Ltd

PG: 3

pg: 3

pg: 4

pg: 5

pg: 5

pg: 6
- **MARINE LICENCE APPLICATION**

Decision on the Marine Licence Application (MLA/2016/00227)

PG: 7

pg: 7
- **ENHANCING NATIONAL INFRASTRUCTURE**

Port Choose Sanderson Group Software Solutions for new RCT

PG: 8

pg: 8
- **WATERFRONT REGENERATION**

Major Marina Fit-Out Contract Awarded for New Dover Marina

PG: 9

pg: 9
- **CELEBRATING ICE'S 200TH ANNIVERSARY**

Port Named One of Top 200 Influential projects that Shaped the World

PG: 10-11

pg: 10-11
- **LOCAL BENEFIT**

Port Project Benefits Local Community

DWDR's Apprentice Update

Portugal to Dover: Port's diverse development attracts graduate

Graduate Reveals the Past, Whilst Planning for the Future

Graduate Implements New Techniques for Next Generation Development

PG: 12-16

pg: 12

pg: 13

pg: 14

pg: 15

pg: 16
- **MORE COMMUNITY INITIATIVES**

Wood Waste for Social Enterprise

£500 Donation to Cerebral Palsy

£500 Donation to Teenager Cancer Trust

Dover Young Citizens Fire Up Local 'Dragons'

Local Schools Health & Safety Poster Initiative

2018 DWDR Ivor Goodsite Hoarding Competition Results

PG: 17-19

pg: 17

pg: 17

pg: 17

pg: 18

pg: 19

pg: 19
- **KEEP IN TOUCH**

PG: 20



WELCOME FROM DWDR

Constructing the over two kilometres of new marine and land infrastructure for Port of Dover's flagship Dover Western Docks Revival (DWDR) development has been one of the most challenging and complex infrastructure projects ever undertaken at Europe's busiest port.

During the last twenty months of construction for DWDR Stage 1&2 it has needed the very best European expertise in marine civil engineering, supported by material suppliers and manufacturers across Europe.

During 2018 DWDR has been further supported by UK contractors for the buildings, infrastructure and pavement works.



cloudcam



in partnership with



VolkerStevin | Boskalis Westminster



25,000t piles driven



1.1M m3 Capital Dredged



1.1M m3 sand Imported



Marina Pier Assembled



Beam Capping Ongoing



VSBW, a joint venture between VolkerStevin and Boskalis Westminster, are delivering the marine structures and bridge contract. With a contract value of £115m, this construction stage includes the design and build of two new berths including quay walls and land reclamation, a new marina pier, the marina curve, navigation channel and new lock gates, Bascule Bridge and capital dredging work.

VolkerFitzpatrick



**10km of Service
Ducts Laid**



**25,000m² Sub Base
Material & 12,800m²
Lean Mix Paving**



**8 Reefer Gantries
Intsalled**



VolkerFitzpatrick are delivering the paving, utilities and infrastructure contract. With a contract value of £21m, this construction includes a mix of heavy duty port paving, interconnecting roads, power and lighting, landscaping, street furniture, reefer gantries, fencing and access gates and border control facilities.



**Floor & Two Discharge
Chambers Completed**



**Internal Chambers
Progressing**



**Mechanical &
Electrical Started**

in partnership with

BUCKINGHAM 
Group Contracting



Buckingham Group Ltd are delivering the build for the new Refrigerated Cargo terminal (RCT), with a contract value of £15m.

in partnership with



Quality Construction Since 1877



Block Work 90% Completed

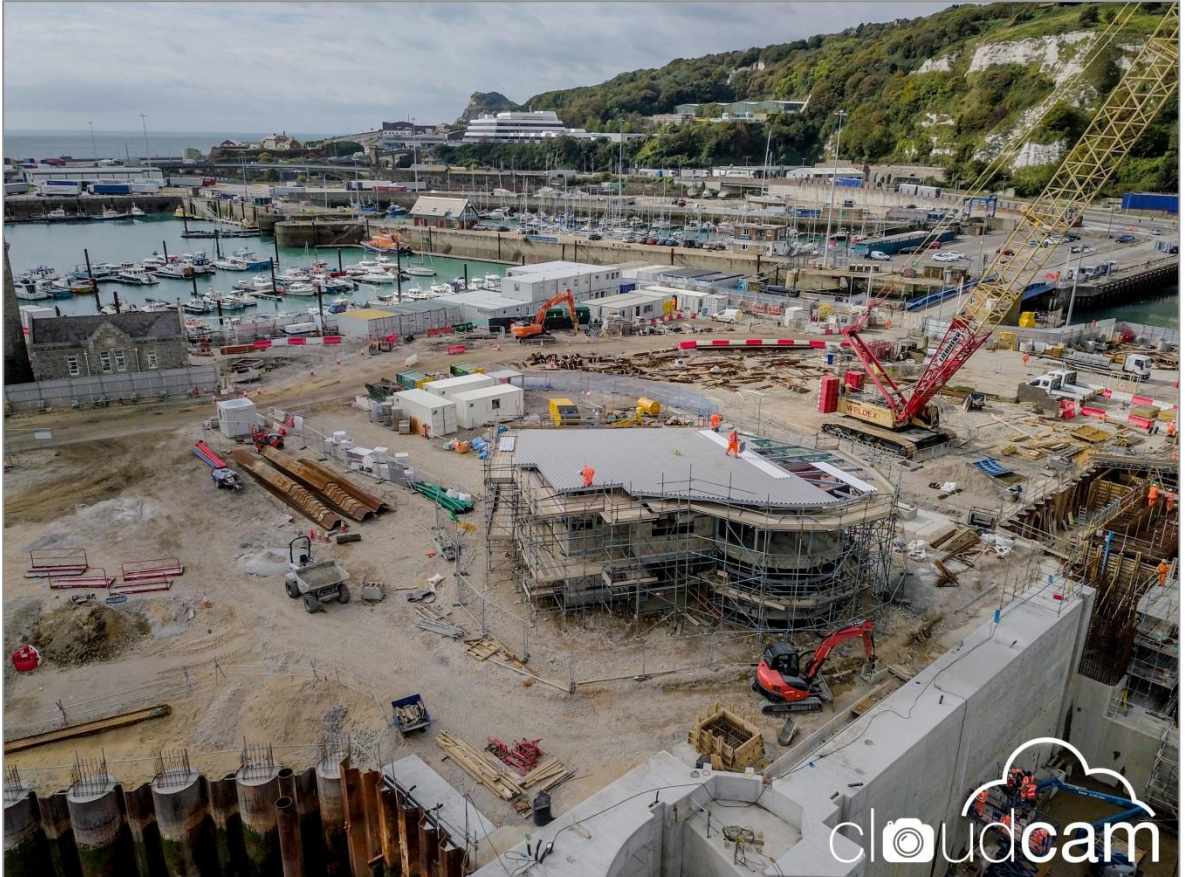


Room Configuration Completed



Operations Control Room Started

WW Martin are delivering the contract to design and construct the new Dover Marina Control Building. With a contract value of £1m, the building will facilitate all marina operations including the Bascule Bridge and the Wellington Dock Navigation Channel lock gates.



MARINE LICENCE APPLICATION

Decision on the Goodwin Sands Marine Licence Application (MLA/2016/00227)...

The Port of Dover is pleased that the Marine Management Organisation (MMO) has issued the marine licence necessary for it to obtain the reclamation material that it would need to complete the final reclamation stage for the DWDR development.

The MMO is an independent, evidence-based decision maker and in order to make an informed decision has considered all the information made available through the application and the public consultation process. We welcome the decision which hopefully brings a conclusion to this matter.

This is excellent news for British trade; DWDR will create additional capacity and resilience in a port which already handles 17 per cent of the UK's trade in goods and is important too for the future of Dover and East Kent region. It forms a key element of the town's regeneration plan, bringing significant economic development to the region, and will act as a catalyst for the waterfront development.

Following three rounds of consultation the licence has suffered a further setback with the protest group submitting a pre-action protocol letter indicating their intent to proceed with a judicial review against the decision

ENHANCING NATIONAL INFRASTRUCTURE

Port choose Sanderson Group software solutions for new Refrigerated Cargo Terminal...

In another milestone for the Port's flagship DWDR development, Sanderson Group has been appointed to supply the Warehouse Management and Cargo Terminal Management software for the new Refrigerated Cargo Terminal (RCT). The software solutions will be deployed throughout the newly constructed multi-purpose RCT which is uniquely positioned to deliver fast, dedicated and direct access to Europe on the shortest sea crossing.

Port of Dover Cargo specialises in the handling, storage and freight forwarding of temperature controlled commodities which include pineapples and bananas, but will also handle more than just the 5-a-day including break bulk, project cargo and abnormal loads for the energy industry across the Kent coast.

"Port of Dover Cargo has installed the Sanderson solution to provide customers with real time updates using barcode scanning and RF functionality from the point of receipt through to put away, order processing, pick and pack and dispatch with speed and accuracy"—

Shaun Pottage, Port of Dover

With excellent road networks and transport links to the UK, Port of Dover Cargo's software solutions will manage the complete operation across the terminal to include ships unloading at the quay, dispatch from the warehouse to road traffic entering and leaving the site while integrating with the current systems at the Port. All vehicle and container movements on the site will be live-tracked.

"We are delighted to be working with the Port of Dover, who are delivering one of the most important cargo project in North West Europe"— Dave Renshaw, CE at Sanderson Supply Chain & Logistics

in partnership with

 **SANDERSON**



WATERFRONT REGENERATION

Major marina fit-out contract awarded for new Dover Marina ...

The Port has awarded the contract to Solent Marine Ltd to design and fit-out Dover's new marina which is expected to be completed during DWDR's Stage 3 works.

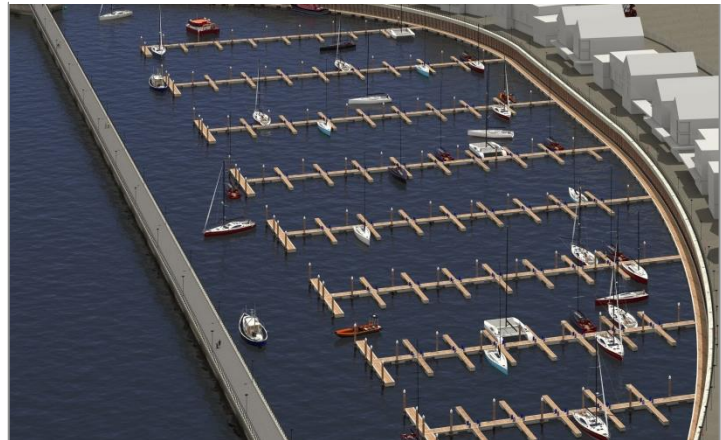
With a value of £2.7million, the contract will begin in early 2019, and include the design and construction of the pontoons, access bridges for the 250-berth marina, fuel tanks and pumps for the fuel berth and pontoons and an access bridge for the new boatyard.

Relocated within the outer harbour and anticipated to be completed by the end of 2019, the new marina development will include finger berths for vessels up to 18m, fuel berth facilities, and a new boatyard and boat hoist. The range of services that will be provided will include Wi-Fi, potable water, LED lighting and electrical power to all leisure berths.

The existing 160 berth Wellington Dock will now become a 24-hr facility accessible through a new navigable channel from the new marina and will be served by a lock providing a minimum of 2.5m deep access at low tide.

"The Dover Western Docks Revival contract is a very prestigious project and turns full circle as my father Victor Simmonds installed pontoons at Dover dating back to the late 80's."
Marc Simmonds, managing director of Solent Marine Ltd

in partnership with



ICE'S 200TH ANNIVERSARY



Port named one of top 200 influential projects that shaped the world...

The Institution of Civil Engineers (ICE) has announced the Port of Dover as one of the top 200 influential projects, past and present, which illustrate how civil engineering has shaped the world and transformed people's lives for the better.

To mark the ICE's 200th anniversary, and to support Government's Year of Engineering, the Institution is highlighting 200 inspirational and world-changing projects from around the world throughout 2018. Nominated by the ICE's members and selected by an expert panel, the chosen projects illustrate the breadth and depth of civil engineering's impact.

The Port of Dover has played a significant role in British history. Dover's existence as a harbour of refuge contributed to Britain's strength as a trading nation. The port was also an essential base for the Royal Navy during both world wars and played a major role in the evacuation of British forces from Dunkirk in 1940.

This was made possible in part due to an enduring connection between the ICE and the Port. Thomas Telford, ICE's 1st President, was approached by the Duke of Wellington, then Chairman of Dover Harbour Board, in 1834 to be involved in the development of Wellington Dock - the first enclosed dock in Dover – which now forms a key feature in the port's current development.

Sir John Hawshaw, another past President of the ICE, designed the Admiralty Pier, which still forms the western arm of the harbour. Completed in 1909, the 800ft (244m) long stone structure curving out from the shore into the English Channel was named as one of the great British engineering feats of the 19th and early 20th century. Built of large concrete blocks weighing from 30 to 40 tons, it has an outward granite facing on those blocks that are above water level.

Today, thanks to the building blocks of the past two centuries, Dover remains a leading commercial port and is currently undergoing a new phase of development. The Port of Dover's flagship £250m Dover Western Docks Revival (DWDR) development is the single biggest investment it has ever undertaken and represents the next exciting stage of its evolution, delivering long-term capacity for a key international gateway handling trade to the value of £122bn and representing up to 17% of UK trade in goods.

“The development of the Port is recognition of its importance locally and internationally as Europe’s busiest roll-on roll-off ferry port. The investment of this scale in the region shows how infrastructure can be a catalyst for economic growth and improving the lives of local people – and civil engineers are at the heart of delivering this” – Jonathan Baggs, Director ICE South East England

With UK Government approval DWDR will deliver two deep-water berths and a new refrigerated cargo terminal, with 13 hectares of reclaimed land for future port-centric development – thereby releasing space to enhance the capacity and efficiency of the ferry terminal in the Eastern Docks. With DWDR plans also including a new marina in the outer harbour and a transformed waterfront, the project will protect jobs and create long-term economic benefit both locally and nationally

“The Port’s flagship Dover Western Docks Revival is a one-off opportunity for the regeneration of Dover, bringing new investment into the area and ultimately ensuring the long-term resilience of this vital cross-Channel trade link” – Jonathan Baggs, Director ICE South East England

The revival of the western part of the Port estate supports the developing destination agenda for Dover, being identified as the key catalyst for the wider regeneration of the area. It has delivered valuable employment opportunities during construction and will continue to do so on completion of the new cargo facility. “The Port of Dover is one of 200 projects that will be published throughout the year on the *What Is Civil Engineering?* pages of the ICE website. *What is Civil Engineering?* will not only host these projects but can also be used as a career guidance tool for those hoping to pursue a career in civil engineering. Once inspired by the projects being produced each month, there is comprehensive advice and guidance on how to become a civil engineer no matter what level of education someone has, or what stage in their career they have reached.

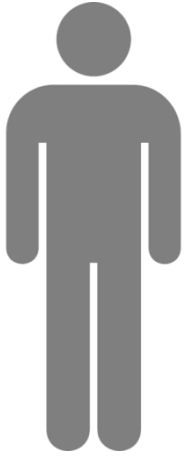
This platform has been designed to help promote the career of civil engineering after it was revealed that only 45% of adults know what the career entails and only 35% of young people could tell you what a civil engineer does.

LOCAL BENEFIT

Port Project Benefits Local Community...

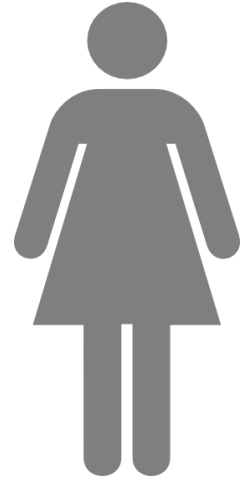


in partnership with
VSBW
VolkerStevin | Boskalis Westminster



308

People have worked
on site since January
2017



48%

**Living within East
Kent**



16%

Female workforce
(above the industry average)



29%

**Living within
immediate area**
(Folkestone-Dover-Deal-Sandwich)

1,517 hours
volunteered in the
local community



£47,119 invested
into community
initiatives

£157m

**Contributed to East Kent economy
through a policy to source labour
and materials locally**

VSBW's apprentice update...

Rory Sutton, Harry Quested and Ismail Gonul started work for VSBW in July 2017 and were recruited from Mid-Kent College as Apprentice Civil Engineers.

Since then, they have studied and gained their NVQ level 3 – Diploma in Construction at the same college and learned on-the-job in the remaining four days a week helping with the construction of the VSBW's marine structures and bridge contract.

"Apprentices are a great route into work for young people and mean proper training and invaluable experience, as well as a wage. "– Dave Herrod, Port of Dover

Rory and Harry have chosen to continue their education at Bristol University, whilst Ismail has chosen Southampton University in Civil Engineering.

**"We wish Rory, Harry and Ismail well in their careers in Civil Engineering "
– Ron Eckersley, VSBW CSR Manager**



Portugal to Dover: Port's diverse development attracts graduate...

As first jobs go there are few larger – and more diverse – than revitalising the Western Docks of Europe's busiest ferry port which handles £122bn of trade each year.

For Nuno Djabi, it not only became the norm, but also proved to be the start of a demanding two years.

Nuno, originally from Portugal, joined the Port's flagship DWDR development as a graduate Civil Engineer in 2016 after graduating from Anglia Ruskin University with a BEng in Civil Engineering.

He has been a part of the project team, managing the various aspects of civils works which included the A20 Junction Improvement programme, the Prince of Wales demolition enabling works and the main marine civil engineering phases of DWDR Stage 1 & 2.

Nuno was also seconded to work with the contractor delivering the new marine infrastructure, VSBW – a joint venture with VolkerStevin Boskalis Westminster, as part of his tailored graduate programme working as a site engineer where he oversaw the construction of Berth A, Berth C and the Marina Curve.

Currently Nuno is involved in the tender and design process for the DWDR Stage 3 and has aspirations to become a Chartered Engineer (CEng) and Project Manager. He is using the DWDR development as the platform to learn under its accredited engineers and leadership team.



“Dover Western Docks Revival is a fantastic opportunity for graduates to join us and play a key role in delivering enhanced national infrastructure for Europe's busiest ferry port” – Kevin Williams, Port of Dover

Graduate reveals the past, whilst Port plans for next exciting chapter...

For as long as Josie can remember she has had a passion for everything historical, which grew into a love for architecture and heritage conservation.

Josie Sinden joined Port's flagship DWDR development as a Graduate Conservation Officer in 2015 after graduating from Anglia Ruskin University with a BSc in Architecture.

But it's closer to home that Josie has been in her element helping to uncover over 300 previously undiscovered artefacts across DWDR's worksite.

Originally a pupil at River Primary School in Dover and now living in Deal, the regeneration of the Western Docks has provided Josie the opportunity to oversee the largest archaeology conservation documentation ever undertaken in the Port.

**"We've exposed finds spanning thousands of years and its helping us to gain a greater understanding of this port's varied and complex past"—
Josie Sinden, Port of Dover**



Exciting items were discovered here such as over 300 historic timbers and evidence of Tudor engineering works in the form of a 'Pent' – the first successful endeavour at the port of controlling a natural shingle bar, which was a scheme of national importance and required an increase in the taxes on beer and grain to fund it. Other finds have included the unearthing of several Ice Age mammoth teeth and Victorian basements.

As part of her ambitions to grow in her field Josie successfully gained her MA in Architectural Conservation with **Kent University** in 2016 and also volunteers as an Items Conservation Assistant with **English Heritage at Dover Castle** in her spare time.

Graduate implements new techniques for next generation development...

Fresh out of university, David, landed his dream job on Port's flagship DWDR development.

David Frazer, from Maidstone, graduated from Anglia Ruskin University in 2014 with a BSc in Building Surveying before joining the team as a Graduate Building Surveyor.

With a determination to become Chartered before the first stages of DWDR were completed, David took on some huge challenges as a graduate - including overseeing the Level 3 Heritage Recording surveys which included recording 180,000 images of every asset located within and around the immediate DWDR boundary.

He was also part of the tender process for the £115m marine structures and bridge contract and project managed various aspects of the enabling works, which also included refurbishment of the project offices.

As part of his tailored graduate programme, and following his ambition to become a Chartered Surveyor, David jumped at the opportunity to be seconded to work with the Port's Development and Maintenance team in the Eastern Docks last year.



“David’s enthusiasm, love for the project and new techniques, such as drone surveys, are testament to why graduate programmes for large-scale civil engineering projects have such a huge success ” – Kevin Williams, Port of Dover

David has also taken the initiative to bring new techniques to the team at the Port. As a qualified unmanned aerial vehicle (UAV) pilot David has enabled the DWDR team to use aerial videos and imagery to record progress and condition surveys alongside 3D-imagery of structures for refurbishment works. He has created point cloud data to ground map the topography for site evaluation and quantification of material volumes.

Since completing his graduate programme in 2016, David has become a permanent member of the team working on DWDR and is now supervising the Refrigerated Cargo Terminal (RCT) contract and Assistant Project Manager for the Dover Marina Control Building construction.

MORE COMMUNITY INITIATIVES

Wood waste for social enterprise...

VSBW have supported Dover Big Local's training and networking opportunities to supply old unwanted pallets to be recycled and made into rudimentary furniture. Dover Big Local's £1million project, a grant aided by the National Lottery, will be open for business this autumn and will be feature in the town for next seven years.



£500 donations to Cerebral Palsy...



Hudson was born at 35 weeks via emergency C-section, due to ongoing obstetric bleeding, and after nine months was diagnosed to have Cerebral Palsy. In a bid to try to help with his mobility, a special physiotherapy clinic has been found that might assist in his development. This care is not readily available on the NHS and hence his family is seeking to raise money through charitable events. His grandfather is Gavin McGeehan, a VSBW employee who walked 63 miles in September which raised £3,100 supporting this family mission. VSBW have pledged £500 as a further gesture of support.

£500 donation to Teenage Cancer Trust

VSBW have supported Teenage Cancer Trust with a £500 donation to the niece of John Smith, VSBW's Site Foreman, who is a teenager presently suffering from cancer. Around seven young people aged between 13 and 24 are diagnosed with cancer every day in the UK. They need expert treatment and support and the Teenage Cancer Trust are the only charity dedicated to making this happen.



Dover young citizens fire up local 'dragons'...

Young people taking part in the National Citizen Service (NCS) programme faced some local 'dragons' earlier this month, to put their social action ideas to the test

The Port and VSBW teamed up to form panel of 'dragons' which consisted of: Jenny Beacon - Corporate Social Responsibility Officer at the Port of Dover, Paula Cruttenden – Project Manager at VSBW and Ron Eckersley – Corporate Social Responsibility Manager at VSBW. Other members of the panels included representatives from Demelza, ADM Computing, Wyndeham Group and Dover District Council (DDC).

NCS is a four week programme that provides young people aged 15-17 the chance to take on new challenges, experience exciting activities, make long-lasting friendships and develop vital skills that will support them later in life. Up to 30 young people prepared a ten minute presentation to introduce their ideas, outline how their project would work and explain what additional assistance they were seeking. The young people were then quizzed by the dragons, which offered the youngsters further ideas and provided valuable feedback to help shape their project.



"We are so delighted to see the positive engagement NCS is having within the local community. It's so important to help young people develop these invaluable skills and ideas and receive encouraging and supportive feedback, from local professionals. "– Gillian Flegg, responsible for delivering the NCS programme at CXK

Local schools Health & Safety poster initiative...

Before the school summer holidays commenced, three local schools were approached by VSBW to gauge their interest in a summer holiday project for their pupils featuring construction site safety.

The children of St Mary's Junior School did take-up this opportunity and a panel has judged all seventy-five entries and a shortlist drawn-up of the best five entries from both infants and juniors. The next stage is to work with these 10 pupils and an illustrator to finalise their submissions so that their poster can go forward to VolkerWessels for their 2019 Safety Campaign.



2018 DWDR Ivor Goodsite Hoarding Competition results...



Four hundred pupils from 22 local schools have achieved 'runners-up' in the UK-wide Considerate Constructors Scheme (CCS) Ivor Goodsite Hoarding Competition. This involved their community art project about what they love about Dover, how they value where they live and what is important to them about their home town.

It's the second year running that DWDR's Ivor Goodsite Hoarding has received second place in the national CCS scheme.

KEEP IN TOUCH

To find out more, come and see us at the DWDR Marketing Suite at the DWDR Project Office, De Bradelei Wharf, Cambridge Road, Dover, CT17 9BJ.

Open every Wednesday from 9am to 5pm, or by appointment via email: DWDR@doverport.co.uk



DWDR@doverport.co.uk

Follow us...



www.doverport.co.uk/DWDR