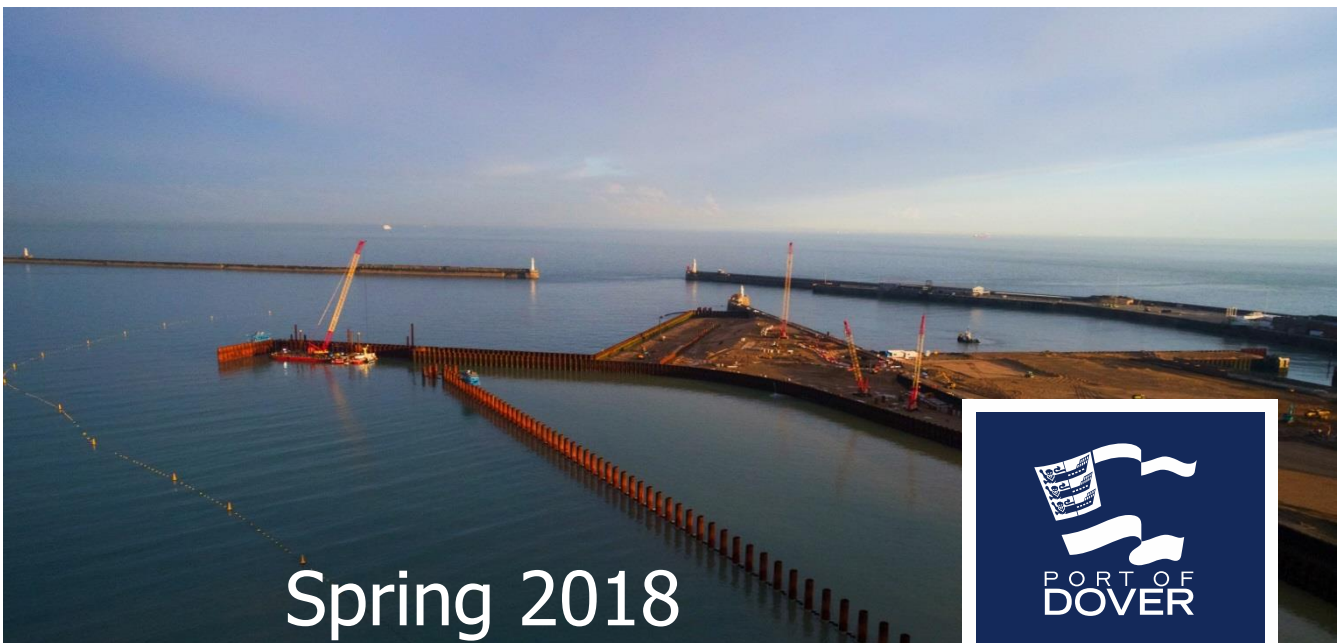


# DOVER WESTERN DOCKS REVIVAL (DWDR) NEWSLETTER





## LATEST NEWS FROM DWDR



Co-financed by the European Union  
Connecting Europe Facility

### • DELIVERING FOR DOVER & THE NATION

**PG: 3**

- Port Awards Major Contract for new Refrigerated Cargo Terminal pg: 3
- Paving the Way in the Next Milestone for Western Docks Development pg: 4
- Port Selects Konecranes for New Dover Cargo Terminal pg: 5
- Western Docks Development Achieves Another Sustainability Excellence Award pg: 6
- Berth A Reclamation pg: 7
- Marina Pier pg: 7
- Marina Curve pg: 8
- Berth C Reclamation pg: 8
- Wellington Dock Navigational Channel pg: 9

### • LOCAL BENEFIT

**PG: 10**

- Port Project Benefits Local Community pg: 10
- Port of Dover and VSBW Help Turn Dover Pink pg: 11
- Working in Partnership with STEM pg: 11
- Four Hundred Local Youngsters Create Stunning Community Art pg: 12
- Celebrating Woman in Construction pg: 13

### • WATERFRONT REGENERATION

**PG: 14**

- Marina Pier Units Set Sail to Dover as Waterfront Regeneration Takes Shape pg: 14-15

### • KEEP IN TOUCH

**PG: 16**

# DELIVERING FOR DOVER & THE NATION

## ***Port Awards Major Contract for New Refrigerated Cargo Terminal ...***

In another milestone for the Port's flagship DWDR development, Buckingham Group Contracting Ltd has been awarded the contract to build the new Refrigerated Cargo Terminal (RCT).

With a value of £15million the contract will deliver the construction of a 9,630 square metre multi-purpose refrigerated cargo facility designed to meet the future demands of the business.

The new RCT will be an externally clad steel frame building with state-of-the-art facilities including eight chambers, each individually temperature controlled and capable of holding cargo between +1 and +14 degrees Celsius (+/-1C), with 20 dock levellers to produce a rapid turnaround for Port of Dover Cargo Ltd customers.

Scheduled to open in the first quarter of 2019, the terminal will be served by completely new marine and land infrastructure including two cargo berths (Berth A: 251m and Berth C: 300m, plus a dolphin) and Gottwald 5 Series Mobile Harbour Cranes.



in partnership with

**BUCKINGHAM**  
Group Contracting 

**“We are looking forward to working with the Port of Dover and other contractors to deliver one of the most important cargo projects in North West Europe and support the creation of new jobs for local people” – Buckingham Contracting Ltd**



## ***Paving the Way in the Next Milestone for Western Docks Development...***

VolkerFitzpatrick has been appointed by the Port of Dover to deliver the paving, utilities and infrastructure contract for the DWDR development.

With a contract value of £21m, this construction stage is a mix of heavy duty port paving, interconnecting roads, power and lighting, landscaping, street furniture, reefer gantries, fencing and access gates, and border control facilities to approximately 10 hectares of the Western Docks.

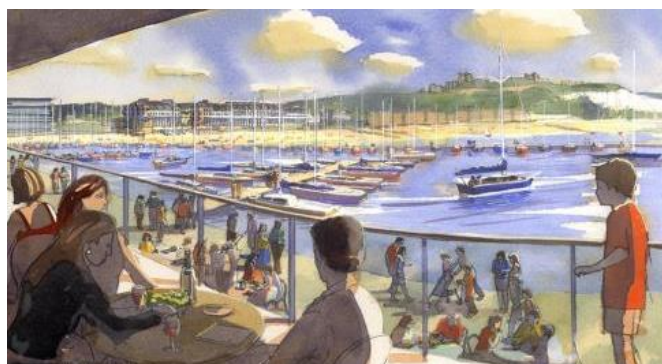
During the 12 month programme VolkerFitzpatrick will be working alongside VSBW, a joint venture between VolkerStevin and Boskalis Westminster, the dredging and marine structures' contractor, whilst they complete the new marine infrastructure and reclamation for the first stage of DWDR.

VolkerFitzpatrick's specialist paving division will carry out the paving works by utilising its own paving and concrete batching plant onsite. Completion of the first and second stage of DWDR, will allow the Port to complete its aim of a dedicated ferry terminal in the Eastern Docks and a transformed waterfront for Dover, is scheduled for early 2019.



in partnership with

**VolkerFitzpatrick**



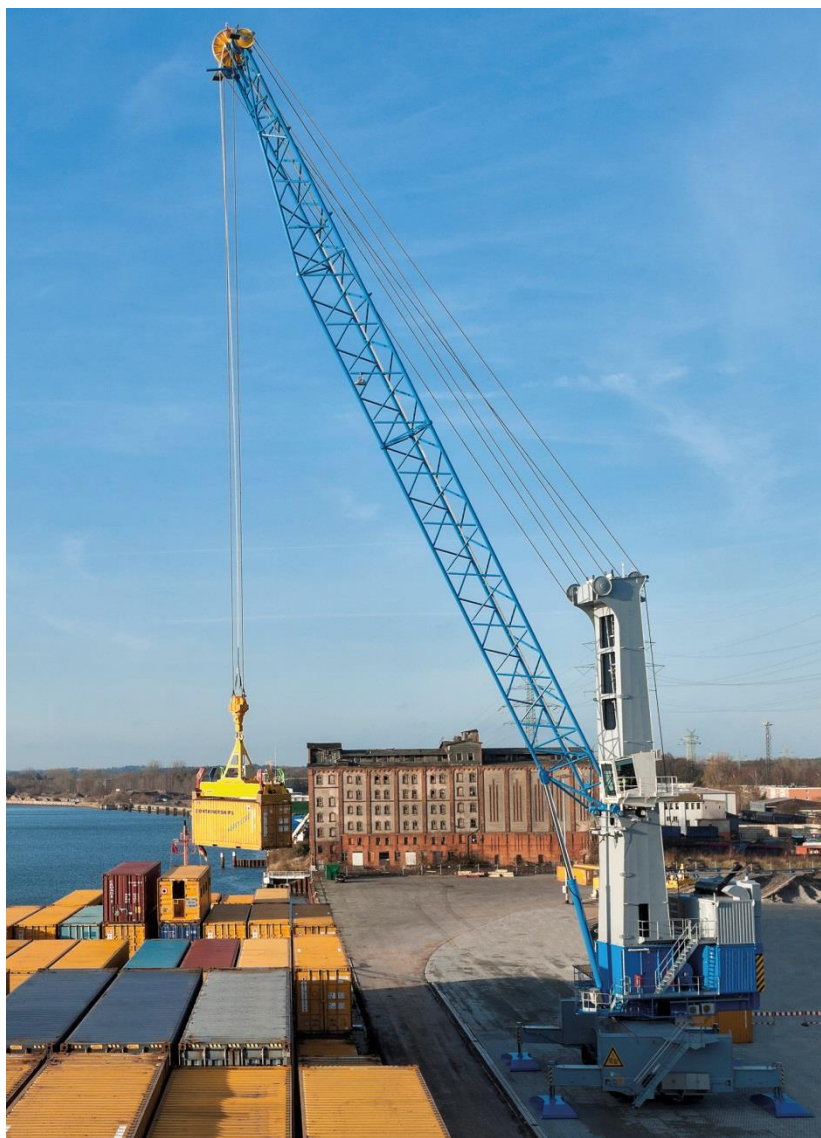
**“Supporting the overall development of the Western Docks is a very exciting and prestigious contract to have been awarded, particularly in terms of the growth expected for the Port in the coming years” –  
VolkerFitzpatrick**

## ***Port Selects Konecranes for New Dover Cargo Terminal...***

Konecranes has been selected to supply two Konecranes Gottwald Model 5 Mobile Harbour Cranes for the Port's new cargo facilities as part of the DWDR development.

The eco-efficient diesel-electric Model 5 Mobile Harbour Cranes will handle mainly containers and palletised fruit at Port of Dover's new multi-purpose refrigerated cargo terminal, which is scheduled to open in the first quarter of 2019. The cranes will operate with the Hybrid drive technology to maximize fuel economy, reduce exhaust emissions and help the Port create a quieter operating environment.

The cranes provide a strong lifting capacity profile with a maximum lifting capacity of 125t, and an outreach of up to 51m.



**“This is another step forward in the delivery of the enhanced cargo facilities to meet future demand for services and to strengthen Port of Dover Cargo Ltd position as the ultimate strategic location with fast, dedicated and direct access to the wider UK and Europe” – Sam Stewart, Port of Dover Cargo Ltd**

## ***Western Docks Development Achieves Another Sustainability Excellence Award...***

DWDR achieved another CEEQUAL award for sustainability in design and construction in civil engineering. The DWDR team and designers were presented with the 'Excellent' CEEQUAL Whole Team Interim Award at this year's Annual Consultative Meeting (ACM) by CEEQUAL Director, Chris Broadbent.

The project's success has come from a strong commitment to embed sustainability in the management processes from the initial planning of the project through to design and ongoing construction. The project achieved particularly high assessment scores in the following categories:

- People and communities (93%)
- Historic environment (100%)
- Ecology and biodiversity (100%)
- Water environment (100%)

The DWDR project – the single biggest investment ever undertaken by the Port of Dover – achieved an overall score of 86.4%. The assessment was jointly submitted with VSBW, a joint venture between VolkerStevin and Boskalis Westminster, who are delivering the construction of the new marine infrastructure and their designers, Tony Gee & Partners LLP and Ramboll UK Ltd.



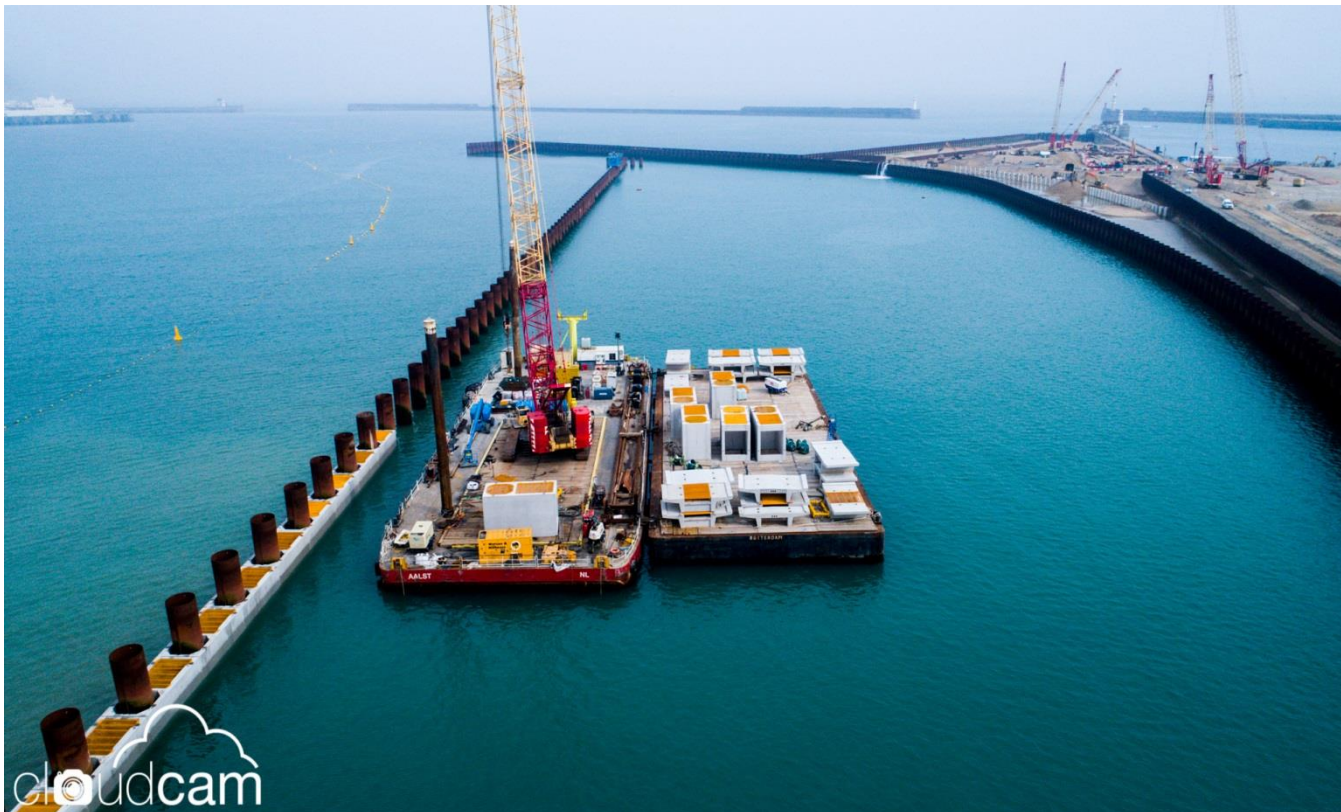
**“This is another great step for this brilliant project and an excellent achievement by the whole team. It demonstrates the continued commitment to sustainable development at this client and outline design stage” – Chris Broadbent, CEEQUAL Director**



## ***BERTH A RECLAMATION***



## ***MARINA PIER***





## MARINA CURVE



## BERTH C RECLAMATION

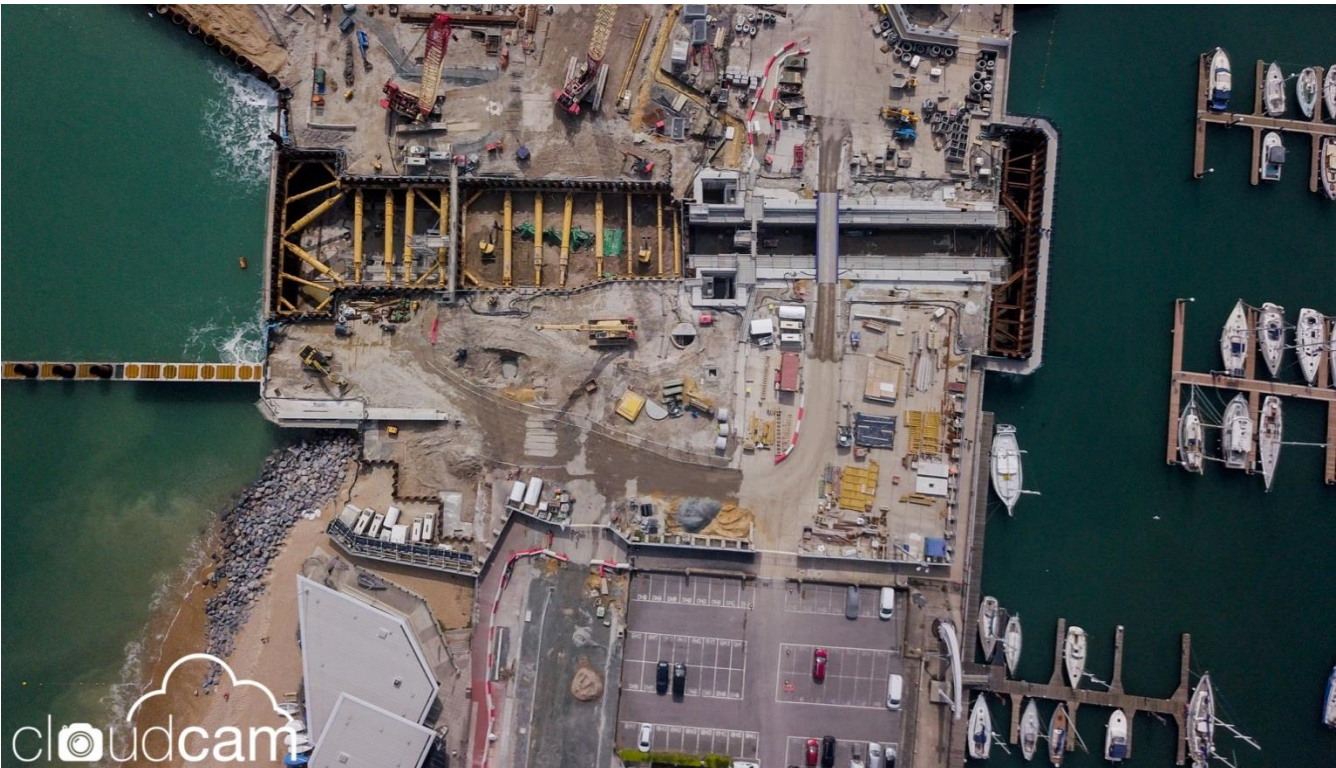




## WELLINGTON DOCK NAVIGATIONAL CHANNEL



## WELLINGTON DOCK NAVIGATIONAL CHANNEL

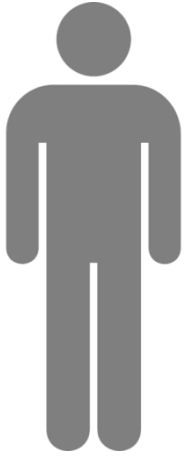


# LOCAL BENEFIT

*Port Project Benefits Local Community...*

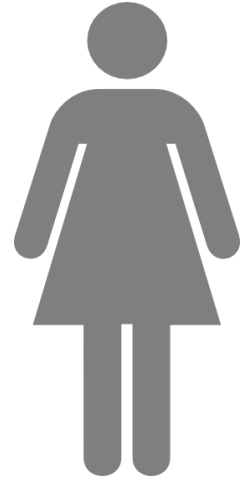


in partnership with  
**VSBW**  
VolkerStevin | Boskalis Westminster



**308**

**People have worked  
on site since January  
2017**



**49%**

**Living within East  
Kent**



**16%**

**Female workforce  
(above the industry average)**



**33%**

**Living within  
immediate area  
(Folkestone-Dover-Deal-Sandwich)**

**1,215 hours  
volunteered in the  
local community**



**£32,260 invested  
into community  
initiatives**

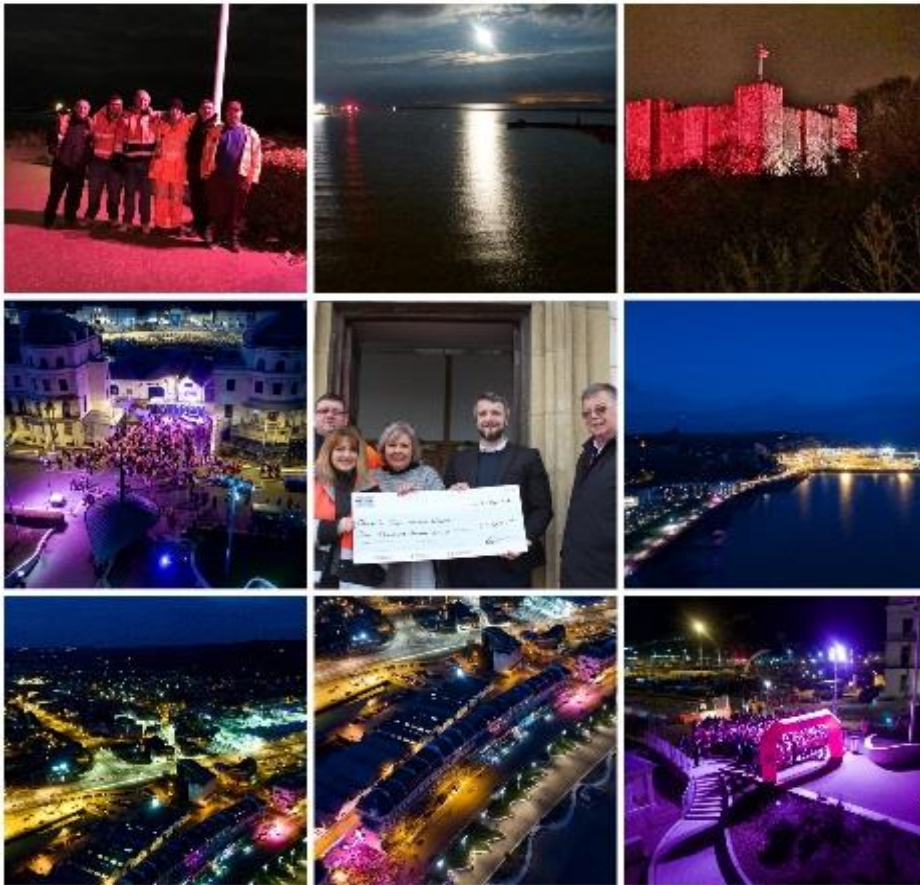
**£129m**

**Contributed to East Kent economy  
through a policy to source labour  
and materials locally**



## ***Port of Dover and VSBW Help Turn Dover Pink...***

The Port of Dover and VSBW were proud to support **#doverspinkarmy** at Dover's Full Moon Walk, over the Easter Bank Holiday weekend, in aid of Breast Cancer Care. The team working on DWDR raised £1,000, which they presented to the charity directly. In addition, Dover Castle was also lit up in pink in honour of the walk, which raised in excess of £50,000 for the charity. Over 600 men and women donned pink in aid of the UK charity which provides support for people living with and beyond breast cancer.



**breast  
cancer  
care**

**"VSBW were  
delighted to be  
playing a small  
part in giving  
back to the local  
community" –  
Scott  
Cruttenden,  
Boskalis  
Westminster Ltd**

## ***Working In Partnership With Stem...***

DWDR's STEM (Science, Technology, Engineering and Maths) Ambassador was on board to support Temple Ewell Primary School, Hythe Bay Church of England Primary School and Oaks Primary Academy, with a presentation on "This is Civil Engineering" and DWDR, with hands-on-learning. Seven classes were involved, with over 200 children learning about what Civil Engineers do in the community.

**"Hands-on learning is a critical  
part of next-generation civil  
engineering" – Ron Eckersley,  
VolkerStevin**



## ***Four Hundred Local Youngsters Create Marvellous Community Art...***

Pupils from local primary schools have revealed a community art project, as part of the project's engagement with the local community. The Port of Dover and VSBW teamed up with Dover smART Project to enter this year's Ivor Goodsite Hoarding Competition for a second consecutive year. Dover smART Project invited 22 local schools who were asked to design a community art project about what they love about Dover, how they value where they live and what is important to them about their home town. Dover smART Project was overwhelmed with over 400 children responding, leading to more than 1,000 entries. Groups of youngsters have worked with local graphic designer and illustrator, Jack Cant, on refining the themes and designs from their sketchbooks. The chosen entries have been transformed onto the hoarding and are now displayed next to the Dover Seasport's Centre for all to see.



**“The children have come up with some amazing, surprising and heart-swelling designs that will make people even more proud of their town when they see them ” – Dover smART Project**



## ***Celebrating Woman in Construction...***

Rajveer Bains, from Ramsgate, is a Procurement Assistant currently working on DWDR on behalf of VSBW. After an initial career in retail and office administration, Rajveer began her transition into the Construction and Engineering Industry in 2015 for Purogenix, at their first UK production plant during a major refurbishment project. Raji was thrown in the deep end, joining the company during their construction, installation and commissioning works phase. Raji embraced a multi-faceted role, excelling in procurement through sourcing best value from suppliers for specialist engineering equipment, consumables and managing subcontractors which helped see the plant into its successful early production phase.

Two years later Raji took her career to the next level when she was introduced by Pettit Recruitment Solutions to esteemed international civil engineering contractor VolkerStevin. Raji was offered her current position as a Procurement Assistant in October 2017 and works as part of the team for Port of Dover's flagship DWDR development.

Assisting the Project Buyer with day-to-day procurement requirements to keep the site running, Raji has more recently gained experience in tendering for major construction materials and specialist subcontract trades overseeing the procurement process from tender stage through to contract placement.



**“VSBW are delighted to be supporting woman in construction and this is a reflection of our commitment to advancing gender equality and equipping all employees to reach their full potential ” – Ron Eckersley, VolkerStevin**

# WATERFRONT REGENERATION

## *Marina Pier Units Set Sail to Dover as Waterfront Regeneration Takes Shape...*

The Port has begun to take delivery of the new Marina Pier, as part of the DWDR development, which consists of 360 individual precast concrete units with a combined weight of 13,350t and marks the return of 550m of revitalised waterfront promenade.

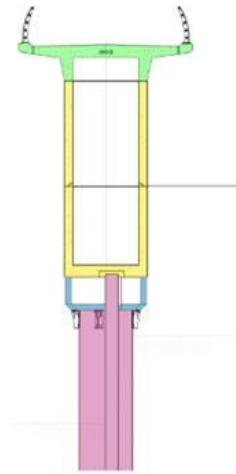
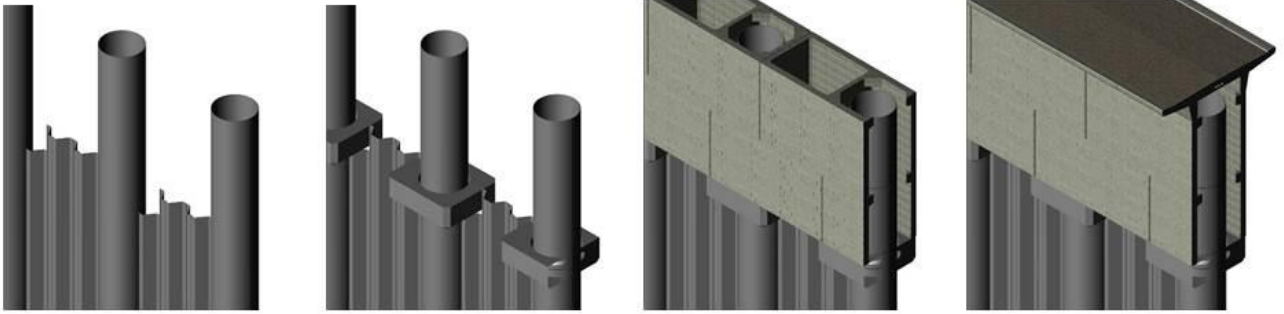
Components for the Marina Pier are being manufactured by Macrete, a company based in Northern Ireland, and at the forefront of the precast concrete industry. Designed by Tony Gee & Partners, the pier will be constructed by VSBW.



**“Dover’s new pier will offer a stylish modern structure which will form the northern part of the marina and deliver on our promise of a transformed waterfront” – Dave Herrod, Port of Dover**

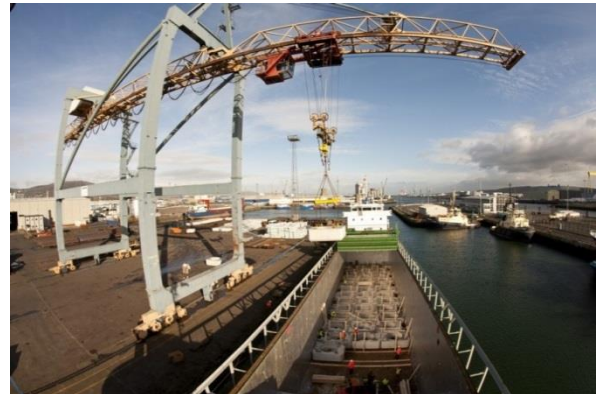


The overall design ensures that the marina pier is in keeping with the surrounding harbour area and aesthetically pleasing to the Dover community. The wave walls have also been featured to promote important macroalgal and epifauna habitat in the harbour - an initiative approved by the Environment Agency.



**"The design solution has sustainability, safety, ease of manufacturing and assembly at its core" – Adeniyi Aje, Tony Gee and Partners LLP**

**"By shipping the units directly from Belfast to Dover, we have contributed to the sustainability and environmental targets of the project" – Abhey Gupta, Macrete Ireland Ltd**



# KEEP IN TOUCH

To find out more, come and see us at the DWDR Marketing Suite at the DWDR Project Office, De Bradelei Wharf, Cambridge Road, Dover, CT17 9BJ.

Open every Wednesday from 9am to 5pm, or by appointment via email: [DWDR@doverport.co.uk](mailto:DWDR@doverport.co.uk)



[DWDR@doverport.co.uk](mailto:DWDR@doverport.co.uk)

Follow us...



[www.doverport.co.uk/DWDR](http://www.doverport.co.uk/DWDR)