



*Immersed in history.
A destination for
the future.*

Port of Dover Cruise

Dover is the premier hub port for cruise lines in the South East of England. It's one of the busiest cruise ports in Britain and Northern Europe, welcoming over 20 individual cruise lines and around 200,000 cruise passengers every year. Located just 76 miles South East of London, Dover is England's gateway to Europe.

20+ PORT OF CHOICE FOR
INDIVIDUAL CRUISE
LINES 

 **200,000**
CRUISE PASSENGERS
WELCOMED EVERY YEAR



CRUISE



Meet the team

Port of Dover Cruise has a dedicated team on hand to deal with any queries you have, please do not hesitate to get in touch with one of the team:



**Head of Business
Development**

Sonia Limbrick

01304 240400 Ext. 5508
sonia.limbrick@doverport.co.uk



**Cruise Operations
Manager**

Mark Punton

01304 240400 Ext.4032
mark.punton@doverport.co.uk



**General Manager, Marine
Services and Harbour Master**

Steven Masters

01304 240400 Ext. 4141
steven.masters@doverport.co.uk



**Business Development
Executive**

Rachel Bushell

01304 240400 Ext. 4402
rachel.bushell1@doverport.co.uk

www.doverport.co.uk/cruise



CRUISE



Travel Connections

The Port of Dover is only moments from the English Channel shipping lanes so it's perfectly placed for both turnaround and port-of-call visits for Norway, the Baltic, round Britain, Iceland, Mediterranean and the Canaries.

Excellent transport links in an unrivalled location

Efficient travel connections – by air, car, coach, ferry or the High Speed rail – make it a straightforward and unrivalled destination.

AIRPORT LINKS:

Gatwick	76 minutes
Heathrow	95 minutes
Stansted	110 minutes

TRAVEL LINKS: (TO LONDON)

By Rail	66 minutes
By Coach	95 minutes



IMAGE: VISIT ENGLAND



CRUISE

Table of distances

PORT	NAUTICAL MILES FROM DOVER	PORT	NAUTICAL MILES FROM DOVER
Amsterdam	148	Hamburg	320
Bergen	596	Le Havre	123
Brest	384	Liverpool	576
Cherbourg	150	London (Tilbury)	74
Copenhagen	691	Oslo	588
Cork	438	Reykjavik	1,393
Dublin	505	Stavanger	534
Edinburgh	395	Zeebrugge	75
Gothenborg	574		



Port of Dover Cruise has a dedicated team on hand to deal with any queries you have. Please contact Sonia Limbrick, Head of Business Development (Cruise)

sonia.limbrick@doverport.co.uk

Tel: **+44 (0)1304 240400 Ext. 5508**

www.doverport.co.uk/cruise



CRUISE

Terminal Maps

CRUISE TERMINAL 1

Cruise Terminal 1 operates within a classically constructed 100-year-old former railway station. Renovated to the highest standard, the state-of-the-art cruise terminal retains the old station architecture for cruise passengers to enjoy whilst relaxing in the stunning modern-day departure lounge.

STATISTICS

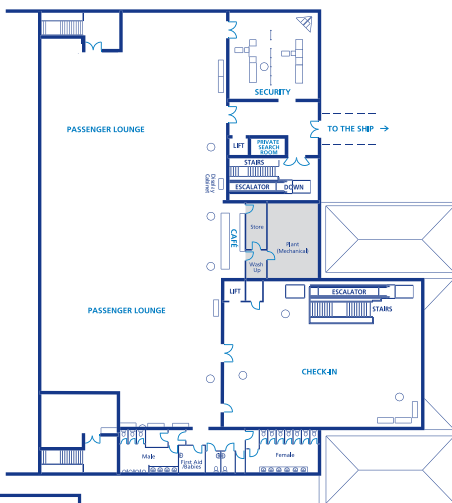
BERTH LENGTH: 340m

DEPTH: Maintained between 8-10m

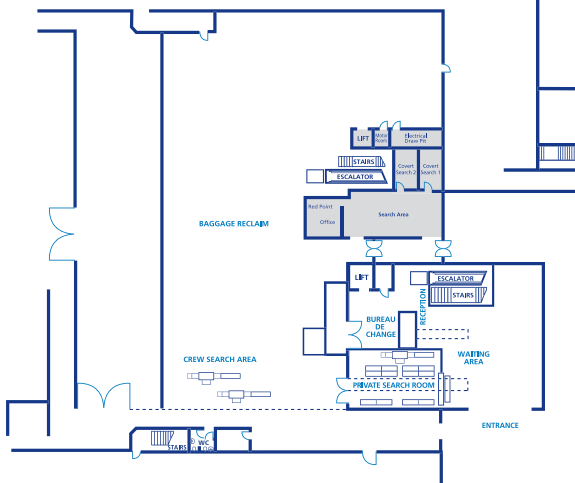
ADVERTISING & SPONSORSHIP

Hosting up to 200,000 passengers per year, with an average dwell time of 2 to 4 hours, our terminals provide excellent advertising, promotional and sponsorship opportunities for cruise lines. Please contact the cruise team for further information.

UPPER FLOOR PLAN



GROUND FLOOR PLAN



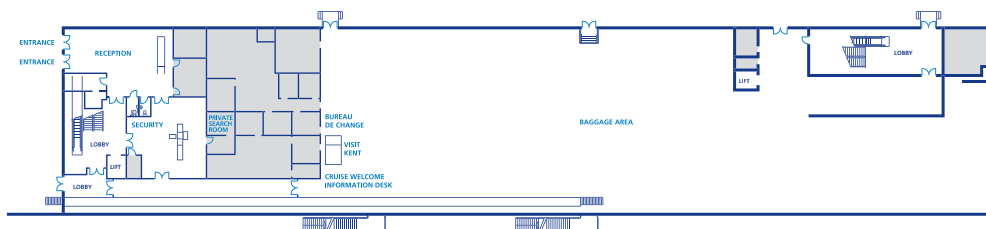
CRUISE



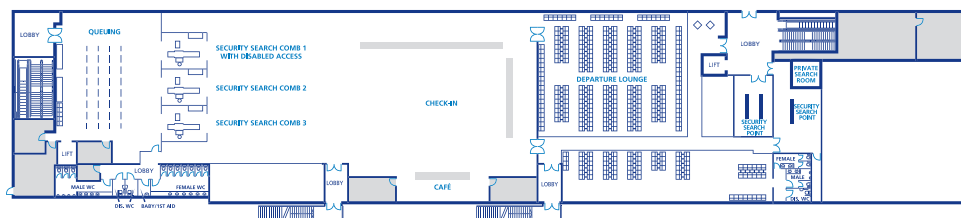
CRUISE TERMINAL 2

The larger of the terminals is Cruise Terminal 2, sleekly designed along the lines of a modern airport facility and constructed in 2000. From the first floor departure lounge, cruise passengers experience unimpeded panoramic views of the Harbour, White Cliffs and Dover Castle.

GROUND FLOOR PLAN



UPPER FLOOR PLAN



STATISTICS

BERTH LENGTH: 340m DEPTH: Maintained between 8-10m

BERTH 3: An additional berth of 240m is available for cruise ships at the Admiralty Pier if needed.

Port of Dover Cruise has a dedicated team on hand to deal with any queries you have. Please contact Sonia Limbrick, Head of Business Development (Cruise)

sonia.limbrick@doverport.co.uk

Tel: **+44 (0)1304 240400 Ext. 5508**

www.doverport.co.uk/cruise



CRUISE



Ship Services

PILOTAGE

Pilotage services for cruise vessels are compulsory. Applicable charges are dependent on length of vessel.

MOORING

For vessels over 280 metres, the Harbour Patrol Launch can assist with running long head and stern lines as a mooring boat. Rocket launched heaving lines are only permissible with strict permission of the pilot, and then, only in adverse weather. Weighted heaving lines are prohibited.

FENDERS

Yokohama fenders (6.5m x 3.3m each) stretch along the length of the quay at all berths.

OVERHEAD GANGWAYS

For cruise passengers we have dedicated covered overhead gangways at Cruise Terminals 1 and 2 and extra uncovered gangways available in various lengths up to 15 metres, should they be required.

CRANES

A range of mobile cranes is available.

TIDAL STREAMS

- Mean spring range 6.0 metres.
- Mean neap range 3.2 metres.
- Due to strong tidal streams within and around Dover Harbour, the following tidal restrictions apply to cruise ship arrivals:
 - Vessels < 125m
No advance restrictions
 - Vessels > 125m < 250m
Restricted between HW -3½ & HW -½
 - Vessels > 250m
Restricted between HW -3½ & HW +1



Port of Dover's highly trained personnel provide 24-hour support to all ships



TUGS

Two Azimuth Stern Drive (ASD) tugs available:

- Each tug has a bollard pull of 54 tonnes (3,600kW) – with their own 80mm towing ropes (Tow rope breaking strain is 180 tonnes).
- One tug is available at an hour's notice, while the second tug is available with four hours' notice.



CRUISE



*A world class
service from a
world class port*

Passenger Services

SECURITY

Like you we value the importance of safety and security, we make sure that these are our top priority for cruise lines and their guests. All our terminals are fully ISPS compliant, all screening and searches are undertaken by experienced, licensed operatives with all procedures regularly inspected by the relevant UK Government Department. The Port of Dover team work continuously with various Government agencies to ensure we operate to a cohesive security strategy that is backed up by our own dedicated Police Force carrying out regular landside and seaward patrols.

PARKING, LUGGAGE & DROP-OFF

Secure onsite parking with:

- 'Park Mark' security status.
- 24-hour security surveillance cameras.
- Regular security checks.
- Allocated coach drop-off bays.

FACILITIES

The Port of Dover has a wide range of facilities to offer cruise passengers including:

- Free Wi-Fi.
- Bureau de Change.
- Experienced and friendly baggage handlers.
- Excellent catering facilities.

DISABLED ACCESS

We strive to ensure all cruise passengers at the Port of Dover have a pleasurable and hassle-free experience.

We provide:

- Easy access car park.
- Wheelchair ramps and walkways.
- Washrooms with disabled facilities.
- Lifts to all floors.

SUSTAINABILITY

The Port of Dover prides itself on its sustainability and environmental performance. We hold the Carbon Trust Standard and have been reducing our carbon footprint consistently since 2007.

The environmental management system drives constant improvements in sustainability and protection of our diverse and rich natural environment. As part of our continual improvements, we are awarding the vessels with the highest scores **The Port of Dover: Green Cruise Award**. We believe it is important to work with all our port users and partners to continue to improve the environmental performance of the Port.

Port of Dover Cruise has a dedicated team on hand to deal with any queries you have. Please contact Sonia Limbrick, Head of Business Development (Cruise)

sonia.limbrick@doverport.co.uk

Tel: **+44 (0)1304 240400 Ext. 5508**

www.doverport.co.uk/cruise



CRUISE



Destination Opportunities

Discover Dover and your cruise guests will also thank you for giving them the opportunity to explore England's oldest county. Kent is famed for its unique cathedrals, castles and country houses. In fact it's such a popular destination that, at the last count, Kent welcomes in the region of 58 million visitors yearly. It's a perfect pre and post cruise destination.

LONDON

In addition to easy and direct motorway access to London, High Speed rail links from Dover mean cruise passengers can easily visit the Capital's sites such as Buckingham Palace, the Tower of London, the London Eye, Big Ben, Trafalgar Square, London Bridge, plus many more.

THE GARDEN OF ENGLAND

Kent is world-renowned for its incredible historic gardens, bursting with fragrance and colour. These majestic sites were created for royals, lords and ladies over the centuries and are now open to the public. With its hop farms, vineyards and fruit orchards, Kent is truly 'the Garden of England'.

CATHEDRALS

Resplendent with its stunning ornamental gateway and one of the world's oldest cathedrals, spectacular Canterbury Cathedral is a must-see for any visitor to Kent. Also topping the list of sacred places is Rochester Cathedral, England's second oldest cathedral dating from 604 A.D.

CASTLES

Set above the iconic White Cliffs of Dover, the historic Dover Castle offers a fascinating insight into frontline Britain over the centuries. Its maze of secret wartime tunnels recall conflicts dating from the Napoleonic era, to Dunkirk in World War 2, and the Cold War. A mere 35 minute drive from Dover lies Leeds Castle, dubbed the 'loveliest castle in the world'.

Also within easy reach are the castles of Hever, Walmer and Deal where visitors can explore the colourful life and times of Henry VIII.



CRUISE



IMAGE: VISIT ENGLAND

ARTS & CULTURE

Kent's landscapes and culture have inspired artistic and literary greats such as Turner and Dickens, a trend that continues to this day with an enviable range of museums, state-of-art galleries and festivals on offer. Key attractions include the Turner Contemporary gallery, Folkestone's vibrant Creative Quarter, and the innovative Marlowe Theatre.

SHOPPING

From the boutique-lined medieval streets of Canterbury to antique-packed Royal Tunbridge Wells, Ashford's not-to-be-missed Designer Outlet, or modern shopping malls like Bluewater, Kent offers a wealth of shopping choices for every taste.

NATURE & WILDLIFE

With cliff-backed beaches, haunting marshes, undulating downs, bird-packed reserves, old English trees in ancient woods and African animals in savannah-style parks, Kent's many outstanding natural attractions are easily explored from Dover. For family fun, Howletts and Port Lympne Wildlife parks offer a safari-style adventure where you can meet gorillas, elephants, lions and much more.

OUTDOORS & ACTIVE

Framed by sandy beaches, coves and secluded bays, the beautiful Kentish coastline offers endless opportunities for all ages to discover the great outdoors. Hike, bike or horseride along tranquil nature trails, stroll above the famous White Cliffs, go surfing and kayaking, or explore Kent's idyllic rural landscapes. The area is also home to premier golf courses such as the links at Royal St George's in Sandwich, a frequent Open Golf championship venue.

WORKING IN PARTNERSHIP

The Port of Dover works closely with Visit Kent to promote local Kent attractions as well as showcasing Dover as an exciting destination in itself. Our long-standing partnership enables the Port to offer local expertise to you and your shore excursion planners in creating immersive packages and programmes of shore based tours and events.



Port of Dover Cruise has a dedicated team on hand to deal with any queries you have. Please contact Sonia Limbrick, Head of Business Development (Cruise)

sonia.limbrick@doverport.co.uk

Tel: **+44 (0)1304 240400 Ext. 5508**

www.doverport.co.uk/cruise



CRUISE



*Immersed in history.
A destination for
the future.*

Why Dover?

With its legendary White Cliffs and iconic castle, historic Dover is instantly recognisable to visitors from around the world. Our impressive terminals, first class vessel facilities, award-winning customer service, excellent transport links, marvellous attractions and vibrant new waterfront development ensure a seamless and enjoyable cruise passenger experience.

TEN REASONS

WHY DOVER IS THE PERFECT PORT FOR YOU:

- 1** Located in England's oldest county, also known as the Garden of England – Kent offers excellent pre and post cruise visitor attractions and accommodation.
- 2** The hub port for cruise lines in the South East of England.
- 3** International Ship and Port Facilities Security (ISPS) Code compliant.
- 4** Perfectly placed for turnaround or port-of-call visits for Norway, the Baltic, round Britain, Iceland, Mediterranean and the Canaries.
- 5** Two impressive state-of-the-art terminals that can accommodate three ships at once.
- 6** The port of choice for over 20 individual cruise lines.
- 7** Fast travel connections: London to Dover only 66 minutes on the High Speed train; two main motorways; Gatwick, Stansted & Heathrow airports. Other airports within close proximity are London City & Luton.
- 8** Welcomes more than 200,000 cruise passengers every year.
- 9** Award-winning customer service & highly trained professionals, plus first-rate ship services.
- 10** Secure on-site parking.



IDEAL FOR VISITS TO NORWAY,
THE BALTIC, ROUND BRITAIN, ICELAND,
MEDITERRANEAN AND THE CANARIES

3

INTERNATIONAL AIRPORTS
ALL WITHIN CLOSE PROXIMITY



SECURE PARKING

3

SHIPS CAN BE HANDLED AT ONCE
WITH TWO STATE-OF-THE-ART TERMINALS



CRUISE



Future of Cruise in Dover

Dover Western Docks Revival, the biggest single investment ever undertaken by the Port of Dover is now well underway. Alongside the development of its cargo business, the project will deliver a transformed waterfront with the opportunity for a host of shops, bars, cafes and restaurants set against Dover's unique backdrop of the Harbour, White Cliffs and Castle. This will further enhance Dover's status as a first class destination of the future for cruise passengers and cruise lines alike. And with major new visitor attractions such as our highly successful White Cliffs Christmas Event at the Port's historic Cruise Terminal 1, Dover is already becoming a year round destination of today.



Port of Dover Cruise has a dedicated team on hand to deal with any queries you have. Please contact Sonia Limbrick, Head of Business Development (Cruise)

sonia.limbrick@doverport.co.uk

Tel: **+44 (0)1304 240400 Ext. 5508**

www.doverport.co.uk/cruise



CRUISE

The Open returns to Kent in 2020

The 149th Open will be played
at Royal St George's, Sandwich
from 12-19 July 2020.



CRUISE



2020 will see the return of one of the world's greatest sporting events to Kent when the 149th Open will be played at Royal St George's in Sandwich.

The Open is one of the oldest and most international championships in professional golf which sees the winner presented with the iconic Claret Jug.

The event has been played at some of the worlds most treasured golf courses and will make its return to Kent for the 15th time. Dover is ideally located for your cruise passengers to quickly and conveniently transfer to Royal St George's in Sandwich.

Please do not hesitate to get in touch with Sonia Limbrick, Head of Business Development, to discuss opportunities at Port of Dover Cruise during The 149th Open 12-19 July 2020.

Port of Dover Cruise has a dedicated team on hand to deal with any queries you have. Please contact Sonia Limbrick, Head of Business Development (Cruise)

sonia.limbrick@doverport.co.uk

Tel: **+44 (0)1304 240400 Ext. 5508**

www.doverport.co.uk/cruise



CRUISE